


BRAKE CATALOG



ROAD CHOICE[®]
TRUCK PARTS



We are committed to keeping
trucks on the road and moving
forward by providing quality parts
to all who repair heavy-duty vehicles.

CONFIDENCE.
COVERAGE.
COMMITMENT.

TABLE OF CONTENTS

REMANUFACTURING PROCESS	4
NOMENCLATURE	5
FRICTION SELECTION	6
HIGH VALUE HV20	8
HIGH VALUE HV23	9
HEAVY-DUTY HD20	10
HEAVY-DUTY HD23	11
HIGH PERFORMANCE HP23	12
ABEX® 6008-1 (EN)	13
ABEX® 685 (EX)	14
ABEX® 6098-1 (SD)	15
REDUCED STOPPING DISTANCE RSD20	16
REDUCED STOPPING DISTANCE RSD23	17
FRICTION COMPARISON CHART	18



**Parts that keep you moving.
Quality that keeps you coming back.**

REMANUFACTURING PROCESS

ROAD CHOICE® GIVES YOU MORE

Road Choice delivers the high-quality brake linings, from economy-grade frictions to premium high-performance solutions that meet or exceed industry standards. You can always count on getting more from Road Choice - more value, more performance and more service life.

CONFIDENCE IN REMANUFACTURING: OUR DETAILED PROCESS

1. Road Choice brake shoe cores are carefully sorted and inspected to ensure proper performance.
2. Shoes that pass inspection are cleaned using pressure and heat to remove contaminants.
3. Special rivet-removal equipment is used to remove brake blocks, which prevents damage to the shoe table.
4. Steel shot peening further strips the shoe down to clean, bare metal.
5. After another visual inspection, shoes pass through a 1,000-ton coining press to restore the integrity of the shoe table radius. This helps eliminate gaps that can cause cracks, rust jacking and uneven wear.
6. Proper fit and performance are guaranteed through multiple checks using special geometry (Go/No-Go) gauges.
7. For extended corrosion resistance and to help prevent rust jacking, shoes are completely immersed in a special anti-corrosion coating, then baked at 200° for several cycles.
8. Special riveting equipment precisely controls the rivet tension across the entire friction block, reducing chances for cracking and extending service life.

NOMENCLATURE

ROAD CHOICE® BRAKES NOMENCLATURE

EXAMPLE: BKE4707QHD23

BREAKDOWN:	BK	E	4707	Q	HD	23
	1	2	3	4	5	6

1. TYPE

- a. BK = Brake Kit
- b. BS = Brake Shoe

2. PRODUCT

- a. E = Exchange (Reman)
- b. N = New

3. FMSI – PER INDUSTRY STANDARDS

4. MANUFACTURER

- a. E = Bendix/Eaton and Bendix/Eaton Extended Service
- b. E2 = Bendix/Eaton Extended Service 2nd Generation
- c. Q = Meritor Q and Q-Plus
- d. X3 = Fruehauf 3rd Generation

5. FRICTION

- a. HV = Road Choice High Value
- b. HD = Road Choice Heavy-Duty
- c. HP = Road Choice High Performance
- d. EN = Abex® 6008-1
- e. EX = Abex® 685
- f. SD = Abex® 6098 Severe-Duty
- g. RSD = Reduced Stopping Distance

6. RATING

- a. 20 = 20,000 lbs.
- b. 23 = 23,000 lbs.

FRICTION SELECTION

ROAD CHOICE® HIGH VALUE

- Excellent value at an economical price
- Good wear and consistent performance under normal operating conditions in low- to-mid-range temperatures

ROAD CHOICE® HEAVY-DUTY

- Performs in higher temperatures with less fade
- Improved wear characteristics in more demanding applications
- Lower total cost of ownership

• **ROAD CHOICE HIGH VALUE HV20** – Economy-grade friction delivering excellent value

• **ROAD CHOICE HIGH VALUE HV23** – Economy-grade friction delivering excellent value

• **ROAD CHOICE HEAVY-DUTY HD20** – Affordable heavy-duty-grade friction with excellent wear

• **ROAD CHOICE HEAVY-DUTY HD23** – Affordable heavy-duty grade friction with excellent value for heavy-duty applications

• **ROAD CHOICE HIGH PERFORMANCE HP23** – Premium-grade friction with outstanding wear in high temperatures and demanding applications

FRICTION SELECTION

ROAD CHOICE ABEX® PREMIUM

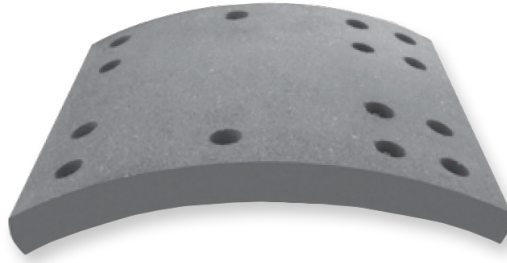
- Premium formulations that provide superior, consistent and reliable performance.

ROAD CHOICE REDUCED STOPPING DISTANCE

- Superior performance, low noise and lower fade for maximum stopping power and longer service life.

- **ROAD CHOICE ABEX® 6008-1 (EN)** – High performance 20,000 lb OE grade lining with superior stopping power and exceptional block life.
- **ROAD CHOICE ABEX® 685 (EX)** – High performance 23,000 lb OE grade lining with superior stopping power and exceptional block life.
- **ROAD CHOICE ABEX® 6098 (SD)** – 23,000 lb friction material ideally suited for severe-duty refuse truck applications.
- **ROAD CHOICE RSD20** – 20,000 lb OE test formulation certified to exceed the Reduced Stopping Distance (RSD) regulations.
- **ROAD CHOICE RSD23** – 23,000 lb OE test formulation certified to exceed the Reduced Stopping Distance (RSD) regulations.

HIGH VALUE HV20



ROAD CHOICE® HIGH VALUE HV20

Economy-grade friction delivering excellent value

Road Choice HV20 linings deliver solid stopping performance at an affordable price. You can rely on Road Choice HV20 to give you the quality and durability you expect.

PERFORMANCE CHARACTERISTICS

GAWR: 20,000 lbs.

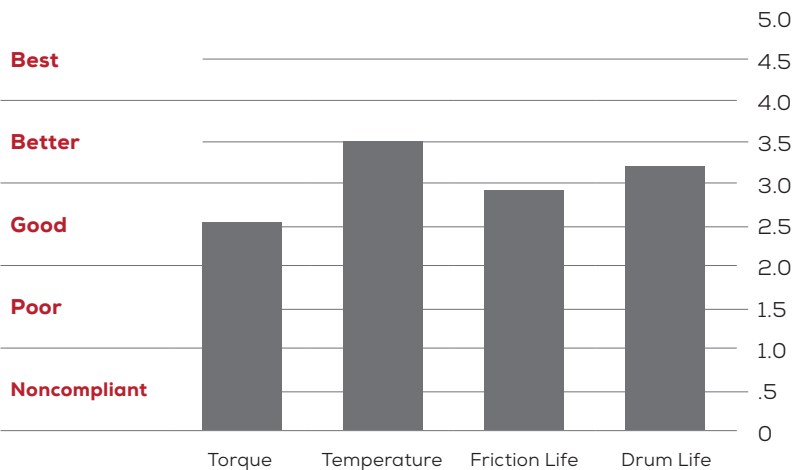
FMVSS 121 Conditions:

Axle Rating: 20,000 lbs.

Brake Size: 16.5" x 7"

Rolling Radius: 19.6"

AL Factor: 165



FRICTION PROPERTIES

Wear

Good wear under normal operating conditions

Temperature

Consistent and repeatable performance in low- to mid-range temperatures

Vocation

Ideal for less-demanding over-the-highway, line haul applications operating at low- to medium-weight/average load over general terrain

Performance/Stopping Power

Reliable torque and solid stopping performance

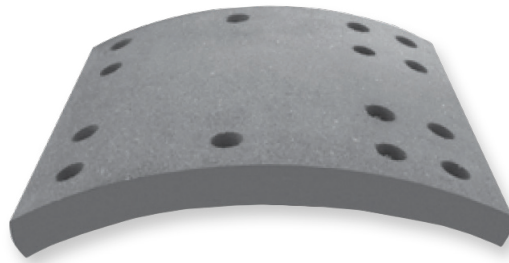
Safety

Certified at 20K GAWR utilizing an AL 165 factor (T30 chamber and 5.5" slack adjuster); MVSS 121 compliant

Environmental

2014 environmental-compliant and non-asbestos

HIGH VALUE HV23



ROAD CHOICE® HIGH VALUE HV23

Economy-grade friction delivering excellent value

Road Choice HV23 linings deliver solid stopping performance at an affordable price. You can rely on Road Choice HV23 to give you the quality and durability you expect.

PERFORMANCE CHARACTERISTICS

GAWR: 23,000 lbs.

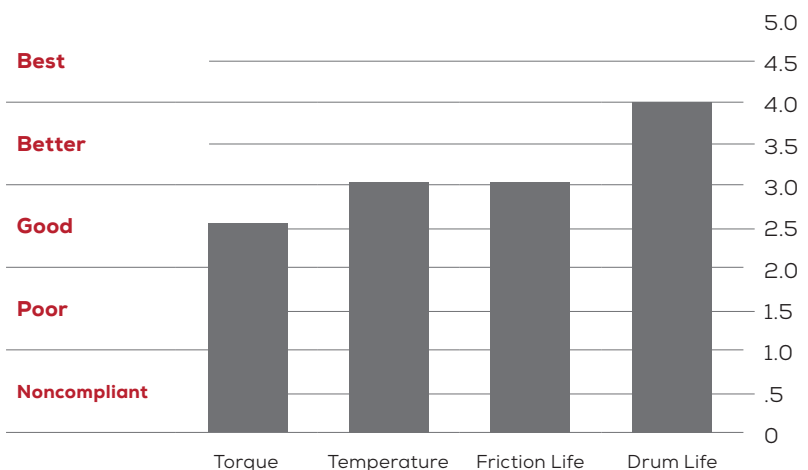
FMVSS 121 Conditions:

Axle Rating: 23,000 lbs.

Brake Size: 16.5" x 7"

Rolling Radius: 20.5"

AL Factor: 165



FRICTION PROPERTIES

Wear

Good wear under normal operating conditions

Temperature

Consistent and repeatable performance in low- to mid-range temperatures

Vocation

Ideal for heavy line haul applications operating at low- to medium-weight/average load over general terrain

Performance/Stopping Power

Reliable torque and solid stopping performance

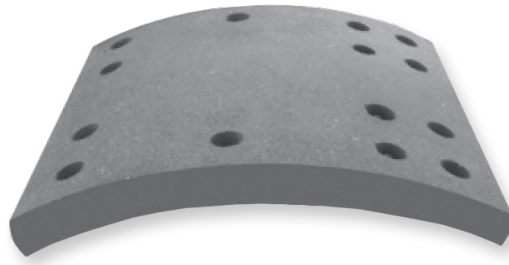
Safety

Certified at 23K GAWR utilizing an AL 165 factor (T30 chamber and 5.5" slack adjuster); FMVSS 121-compliant

Environmental

2014 environmental-compliant and non-asbestos

HEAVY-DUTY HD20



ROAD CHOICE® HEAVY-DUTY HD20

Affordable heavy-duty-grade friction with excellent wear

HD20 linings are an excellent choice if you're looking for an attractively priced 20,000-lb. material with mid-range stopping power, long service life and lower cost per mile.

PERFORMANCE CHARACTERISTICS

GAWR: 20,000 lbs.

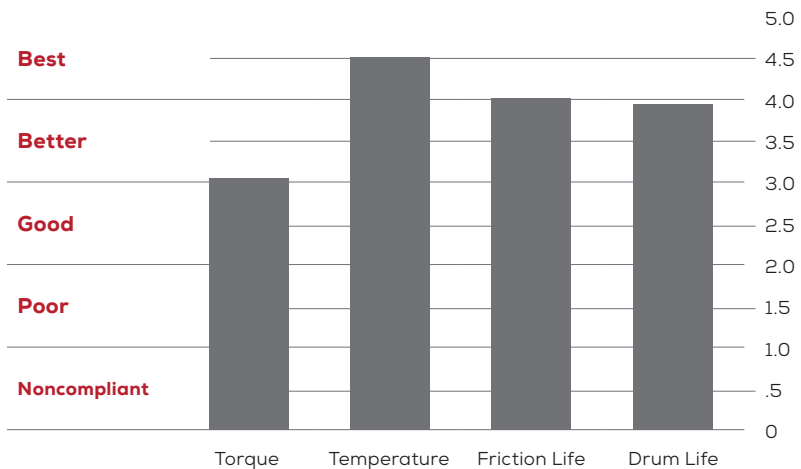
FMVSS 121 Conditions:

Axle Rating: 20,000 lbs.

Brake Size: 16.5" x 7"

Rolling Radius: 20.8"

AL Factor: 165



FRICTION PROPERTIES

Wear

Excellent friction and drum wear across a wide range of applications

Temperature

Minimal fade at mid- to high-temperatures

Vocation

Designed to meet the requirements of line-haul and general freight (average weight) applications; well-suited for above-average to steep/rough terrain

Performance/Stopping Power

Delivers stable mid-range stopping power

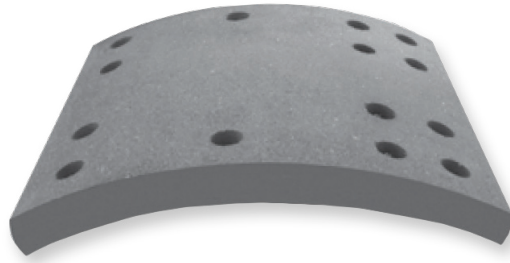
Safety

Certified at 20K GAWR utilizing an AL 165 factor (T30 chamber and 5.5" slack adjuster); FMVSS 121-compliant

Environmental

2014 environmental-compliant and non-asbestos

HEAVY-DUTY HD23



ROAD CHOICE® HEAVY-DUTY HD23

Affordable heavy-duty-grade friction with excellent value for heavy-duty applications

HD23 provides excellent friction and drum wear across a broad range of applications. Appropriate for heavy line haul and heavy pick up and delivery, Road Choice HD23 linings offer stable mid-range stopping at higher speeds and minimal fade at mid- to high-temperatures.

PERFORMANCE CHARACTERISTICS

GAWR: 23,000 lbs.

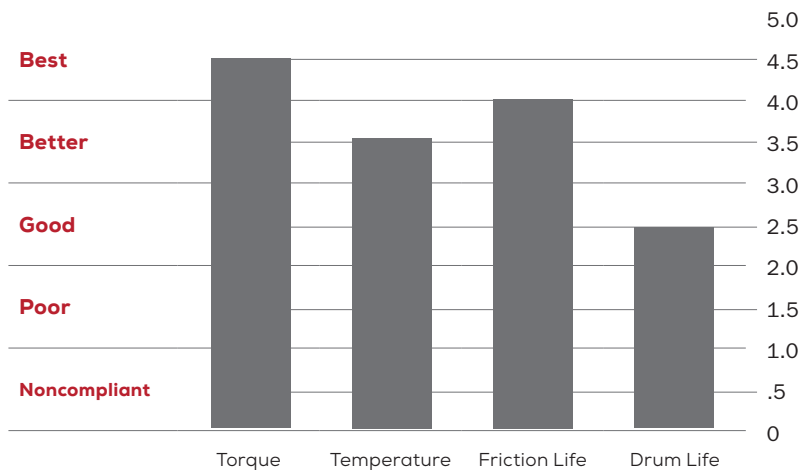
FMVSS 121 Conditions:

Axle Rating: 23,000 lbs.

Brake Size: 16.5" x 7"

Rolling Radius: 19.6"

AL Factor: 165



FRICTION PROPERTIES

Wear

Excellent friction and drum wear across a wide range of applications

Temperature

Minimal fade at mid- to high-temperatures, including the elevated temperatures experienced during the heavy-duty cycles of pick up and delivery

Vocation

Designed to handle heavy line haul and pick up and delivery; suitable for average to steep terrain

Performance/Stopping Power

Delivers stable mid-range torque for higher capacity stopping at higher speeds

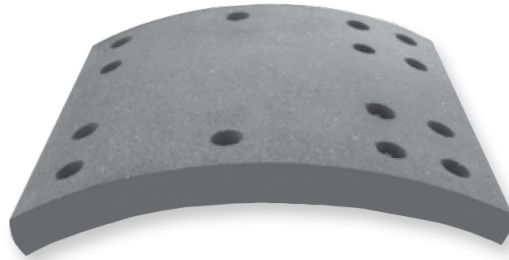
Safety

Certified at 23K GAWR utilizing an AL 165 factor (T30 chamber and 5.5" slack adjuster); FMVSS 121-compliant

Environmental

2014 environmental compliant and non-asbestos

HIGH PERFORMANCE HP23



ROAD CHOICE® HIGH PERFORMANCE HP23

Premium-grade friction with outstanding wear in high temperatures and demanding applications

HP23 is designed to excel under high heat and the demanding conditions seen in severe service, heavy haul, and pick up and delivery applications.

GAWR: 23,000 lbs.

FMVSS 121 Conditions:

Axle Rating: 23,000 lbs.

Brake Size: 16.5" x 7"

Rolling Radius: 20.5"

AL Factor: 165

FRICITION PROPERTIES

Wear

Engineered to provide outstanding wear while standing up to the demanding environment of a high temperature, heat-soaked brake that is making frequent stops

Temperature

Designed to maintain performance and wear characteristics when operating under reduced airflow and high-temperature stops that come with operating pick up and delivery vehicles

Vocation

Ideal for heavy line hauls running steep terrain, refuse vehicles making frequent stops, and school buses; ideal for brakes that are run at high temperatures for extended periods

Performance/Stopping Power

Delivers high torque and minimal fade. Designed to stop vehicles loaded to their limits while maintaining performance

Safety

Certified 23K GAWR utilizing an AL 165 factor (T30 chamber and a 5.5" slack adjuster); FMVSS 121-compliant

Environmental

2014 environmental-compliant and non-asbestos

ABEX® 6008-1 (EN)



ROAD CHOICE® ABEX® 6008-1 (EN)




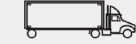




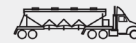




Premium 20,000 lbs. brake lining.

Abex® 6008-1 is a high-performance OE grade brake lining with superior stopping power and exceptional block life under all conditions.

PRODUCT PROFILE

- FMVSS 121 rated 20,000 lbs.
- 165 AL Factor (30 x 5.5)
- OE Grade
- Crack resistant
- Copper free
- Low swell and growth
- Excellent fade, recovery and retardation
- Exceptional lining and drum life
- Manufactured in ISO TS 16949 certified plants
- Superior flexural strength and modulus of elasticity to resist cracking
- Superior stopping power

APPLICATIONS

 Tandem Tractor/Trailer	 Spread Tandem	 Multiple Trailer	 Single Tractor/Trailer	 Straight Truck
 Container Chassis	 Livestock Trailer	 Car Hauler	 Dry Bulk	 Tanker
 Flat Bed Trailer	 Van Trailer	 School Bus		

FMVSS 121 BRAKE STANDARD* Typical Dynamometer Plot

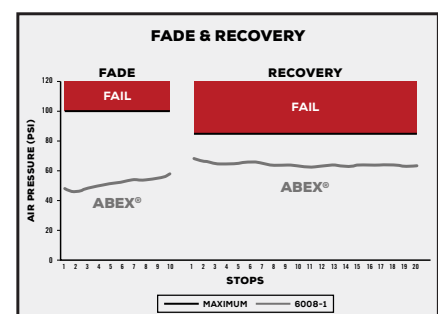
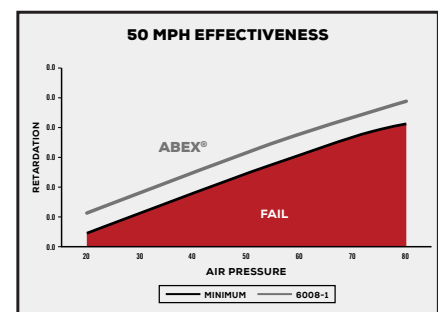
Test Parameters:

Brake: Meritor 16.5 x 7 Q Plus

Axle Load: 20,000 lbs.

AL Factor: 165 (30 x 5.5)

*Tested internally by Link-certified dynamometer



ABEX® 685 (EX)



ROAD CHOICE® ABEX® 685 (EX)

Premium 23,000 lbs. brake lining.

Abex® 685 is a high-performance OE grade brake lining with superior stopping power and exceptional block life under all conditions.

PRODUCT PROFILE

- FMVSS 121 rated 23,000 lbs.
- 165 AL Factor (30 x 5.5)
- OE Grade
- Crack resistant
- Copper free
- Low swell and growth
- Excellent fade, recovery and retardation
- Exceptional lining life and drum compatibility
- Manufactured in ISO TS 16949 certified plants
- Superior flexural strength and modulus of elasticity to resist cracking
- Superior stopping power

APPLICATIONS

Tandem Tractor/Trailer	Spread Tandem	Multiple Trailer	Single Tractor/Trailer	Straight Truck
Container Chassis	Livestock Trailer	Car Hauler	Dry Bulk	Tanker
Flat Bed Trailer	Van Trailer	Logging Trailer	Single Axle Dump	Tandem Axle Dump
Refuse Truck	Tandem Axle Mixer	School Bus	Fire Truck	

FMVSS 121 BRAKE STANDARD* Typical Dynamometer Plot

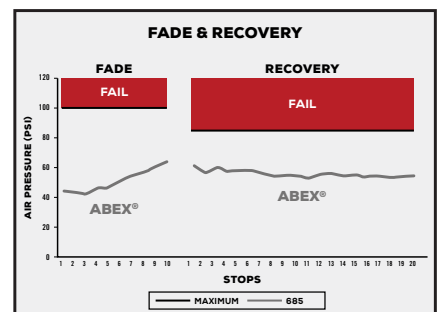
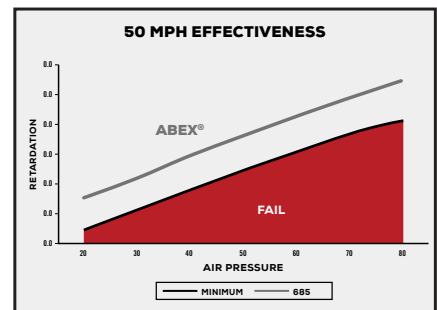
Test Parameters:

Brake: Meritor 16.5 x 7 Q Plus

Axle Load: 23,000 lbs.

AL Factor: 165 (30 x 5.5)

*Tested internally by Link-certified dynamometer



ABEX® 6098 (SD)



ROAD CHOICE® ABEX® 6098 (SD)

Premium 23,000 lbs. brake lining.

Preferred by an industry that demands the best.



















Abex® 6098 is a Severe Duty, OEM approved brake lining specifically designed for the demands of heavy loading and multiple stops.

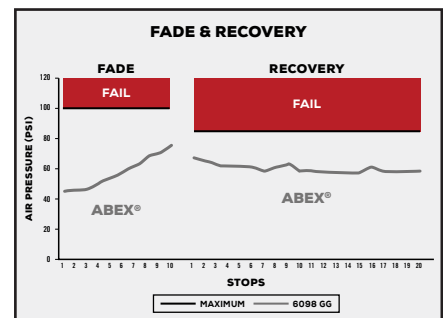
PRODUCT PROFILE

- FMVSS 121 rated 23,000 lbs.
- 165 AL Factor (30 x 5.5)
- OEM Approved
- Excellent lining life in Severe Duty applications
- Manufactured in ISO TS 16949 certified plants
- Superior flexural strength and modulus of elasticity to resist cracking (6760lbs/sq in)
- Smooth stopping at all pressures
- Low swell and growth

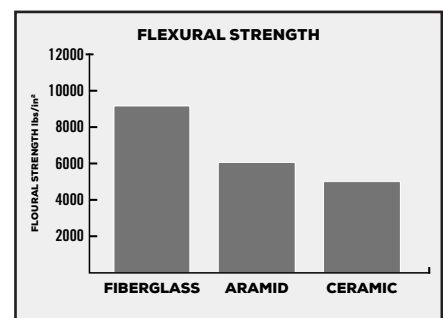
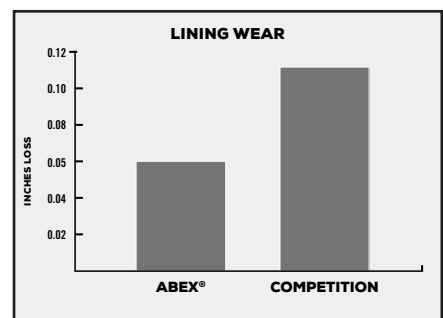
APPLICATIONS

Recommended for use on S-cam brakes

 TANDEM TRACTOR/TRAILER	 SPREAD TANDEM	 MULTIPLE TRAILER	 SINGLE TRACTOR/TRAILER	 STRAIGHT TRUCK
 CONTAINER CHASSIS	 LIVESTOCK TRAILER	 CAR HAULER	 DRY BULK	 TANKER
 FLAT BED TRAILER	 VAN TRAILER	 LOGGING TRAILER	 SINGLE AXLE DUMP	 TANDEM AXLE DUMP
 REFUSE TRUCK	 TANDEM AXLE MIXER	 FIRE TRUCK		

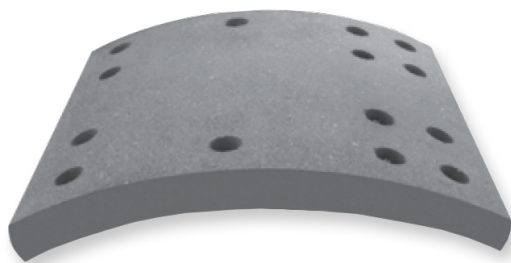


Long Life SEVERE DUTY Lining 6098 GG vs. THE COMPETITION



Abex® linings' high fiberglass content gives them superior flexural strength. Fiberglass has 50% more flexural strength than other brake lining fibers.

ROAD CHOICE® RSD20



ROAD CHOICE® RSD20

Reduced Stopping Distance (RSD) Linings

Road Choice RSD linings are a premium grade friction certified to exceed the 2011 Reduced Stopping Distance (RSD) Phase 1 regulations. Road Choice RSD20 has an average stopping distance of 235', delivering a safety margin equivalent to 1 ½ car lengths. With high torque and minimal fade, Road Choice RSD linings offer a cost-effective solution to maintain RSD compliance.

Road Choice RSD linings exhibit low wear, and fewer replacements means lower total cost of ownership.

Road Choice RSD is available in a wide range of applications to cover all your brake shoe requirements.

PERFORMANCE CHARACTERISTICS

GAWR: 20,000 lbs.

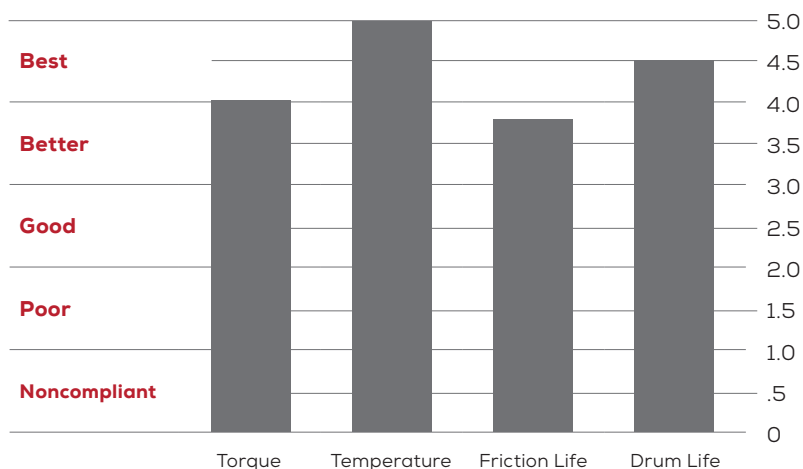
FMVSS 121 Conditions:

Axle Rating: 20,000 lbs.

Brake Size: 16.5" x 7"

Rolling Radius: 20.8"

AL Factor: 165



FRICTION PROPERTIES

Wear

Provides the low wear of Road Choice offerings while delivering RSD compliance

Temperature

High temperature fade resistance under panic stopping conditions and RSD compliance with an acceptable margin of safety

Vocation

Appropriate for line haul vehicles with GVWRs up to 52,000lbs

Performance/Stopping Power

Delivers high torque with minimal fade to achieve RSD vehicle certification

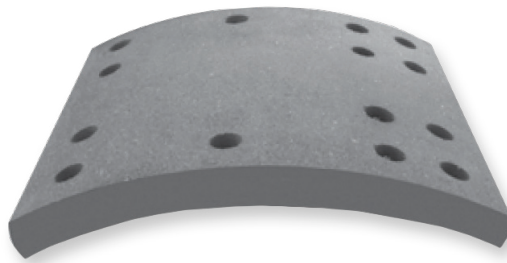
Safety

Third party tested to meet the RSD mandate at 20K GAWR utilizing an AL 165 factor (T30 chamber and 5.5" slack adjuster). All linings are FMVSS 121 compliant

Environmental

2014 environmental-compliant and non-asbestos

ROAD CHOICE® RSD23



ROAD CHOICE® RSD23

Reduced Stopping Distance (RSD) Linings

Road Choice RSD linings are a premium grade friction certified to exceed the 2011 Reduced Stopping Distance (RSD) Phase 1 regulations. Road Choice RSD23 has an average stopping distance of 235', delivering a safety margin equivalent to a car lengths. With high torque and minimal fade, Road Choice RSD linings offer a cost effective solution to maintain RSD compliance.

Road Choice RSD linings exhibit low wear, and fewer replacements means lower total cost of ownership.

Road Choice RSD is available in a wide range of applications to cover all your brake shoe requirements.

PERFORMANCE CHARACTERISTICS

GAWR: 23,000 lbs.

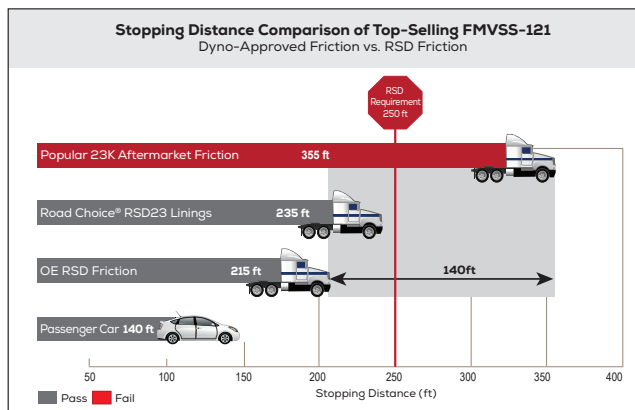
FMVSS 121 Conditions:

Axle Rating: 23,000 lbs.

Brake Size: 16.5" x 7"

Rolling Radius: 20.5"

AL Factor: 165



FRICTION PROPERTIES

Wear

Provides the low wear of Road Choice offerings while delivering RSD compliance

Temperature

High temperature fade resistance under panic stopping conditions and RSD compliance with an acceptable margin of safety

Vocation

Appropriate for line haul vehicles with GVWRs up to 80,000lbs

Performance/Stopping Power

Delivers high torque with minimal fade to achieve RSD vehicle certification

Safety

Third party tested to meet the RSD mandate at 23K GAWR utilizing an AL 165 factor (T30 chamber and 5.5" slack adjuster). All Bendix® linings are FMVSS 121 compliant

Environmental

2014 environmental-compliant and non-asbestos

FRICITION COMPARISON

	20,000 lbs. GAWR		23,000 lbs. GAWR	
ROAD CHOICE	HV20	HD20	HV23	HD23
	Compares to	Compares to	Compares to	Compares to
Abex®	6085 / 6014	6166 / 6008	VL23 / 6149	685
Alliance	EG1A	MG1A	EG2A	MG2LA
Bendix	BB200	BA200	BB230	BA230
Brake Pro	CM14 / CM15	CM16	CM18	CM20 / CM22
FleetPride	BRONZE / BLACK	BLUE	GREEN	RED
Fras-le	520 / 540	550	523	555 / 557
Gorilla	GB20KV / GB20KSTD	GB20KP	GB23V / GB23KSTD	GB23KP
Haldex	V77 / GN2017	GF2008	V88 / GD2016	GH3023
Marathon	MV20	DB20 / HS20	MV23	HS23
Meritor	EG1	MG1 / MA212	EG2	MG2 / MA312
Silverback	SB20		SB23	SB23HTP
Stemco	SP20	XL20	SP23	HP
TRP	STD20	PR20	STD23	PR23
TruckPro	AR1	AR3	AR2	AR4
Vipar	820	825	830	835

	20,000 lbs. GAWR	23,000 lbs. GAWR
ROAD CHOICE	RSD20	RSD23
RSD	Compares to	Compares to
Abex®	6260	6297
Bendix	BA202R	BA232R
Meritor	MA1201	MA2301
Meritor	MA2001	MA2302
Meritor	–	MA2303



ROAD CHOICE®
TRUCK PARTS

© 2019 Road Choice® Truck Parts – All Rights Reserved.
RCOBK-19CAT